

# Integrated Circuits and Systems Design

Department of Electrical and Computer Engineering  
Seoul National University



## Woo-Seok Choi

### Education

2017.05 PhD ECE, University of Illinois at Urbana-Champaign

2010.08 MS EECS, Seoul National University

2008.08 BS EE, Seoul National University

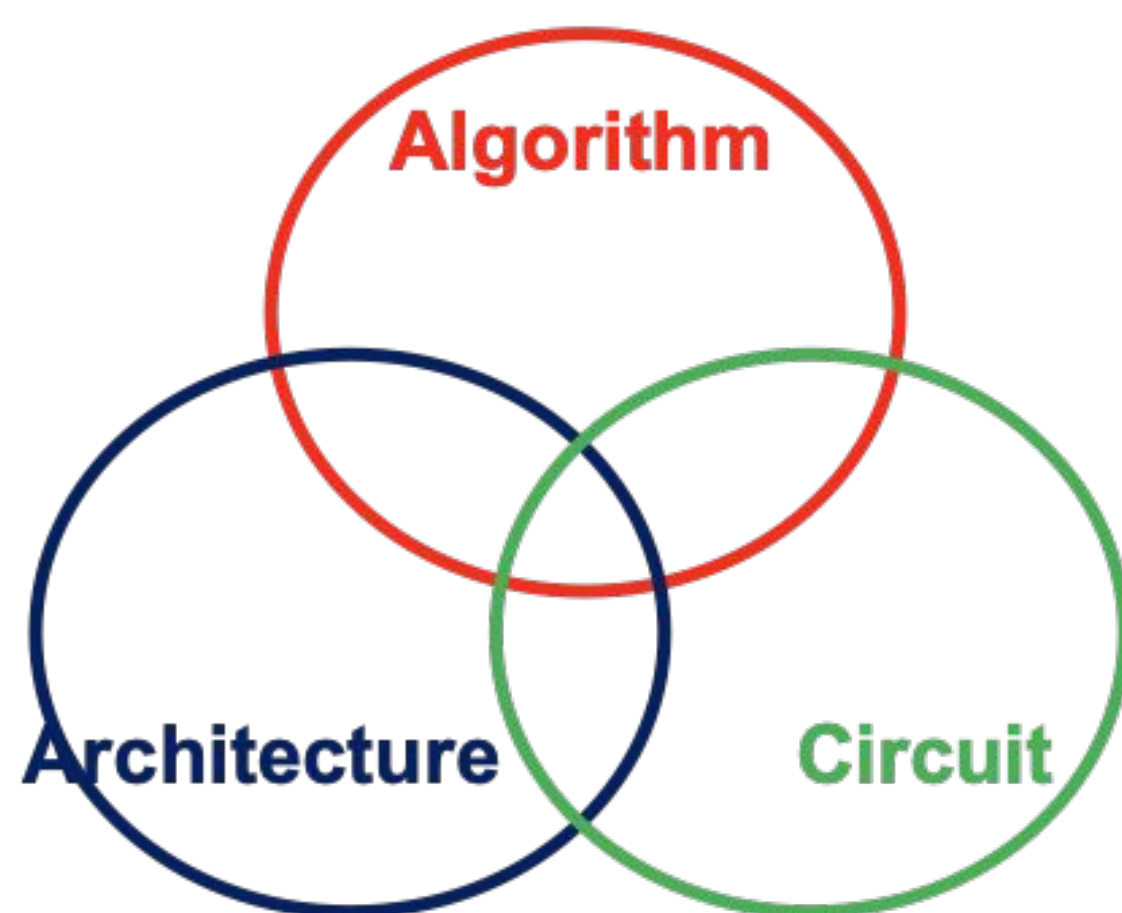
### Experience

2020-Present Assistant Professor, ECE, Seoul National University

2018-2020 Postdoctoral Fellow, Harvard University

2017-2018 Postdoctoral Research Associate, University of Illinois at Urbana-Champaign

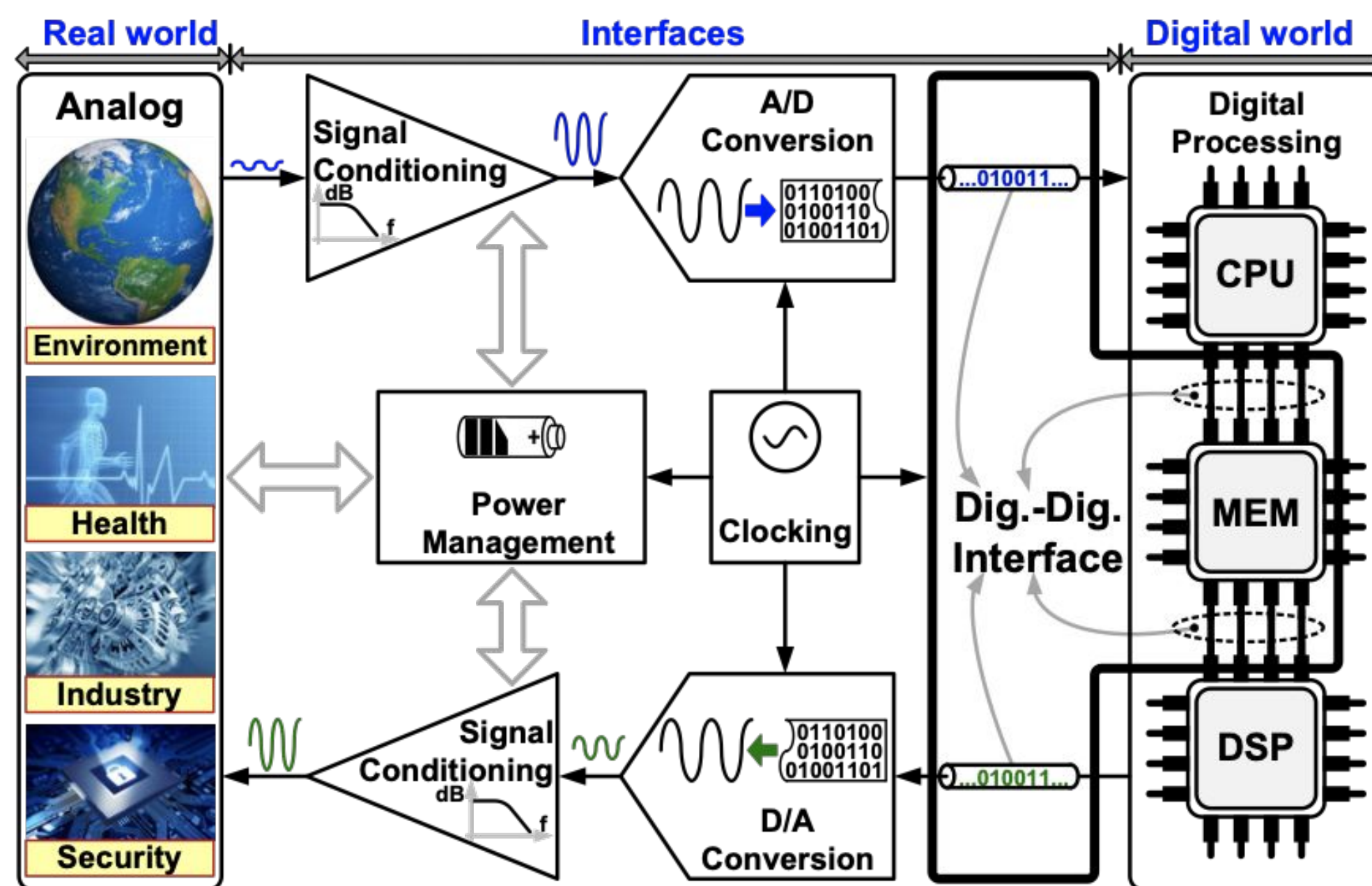
### Research Interests



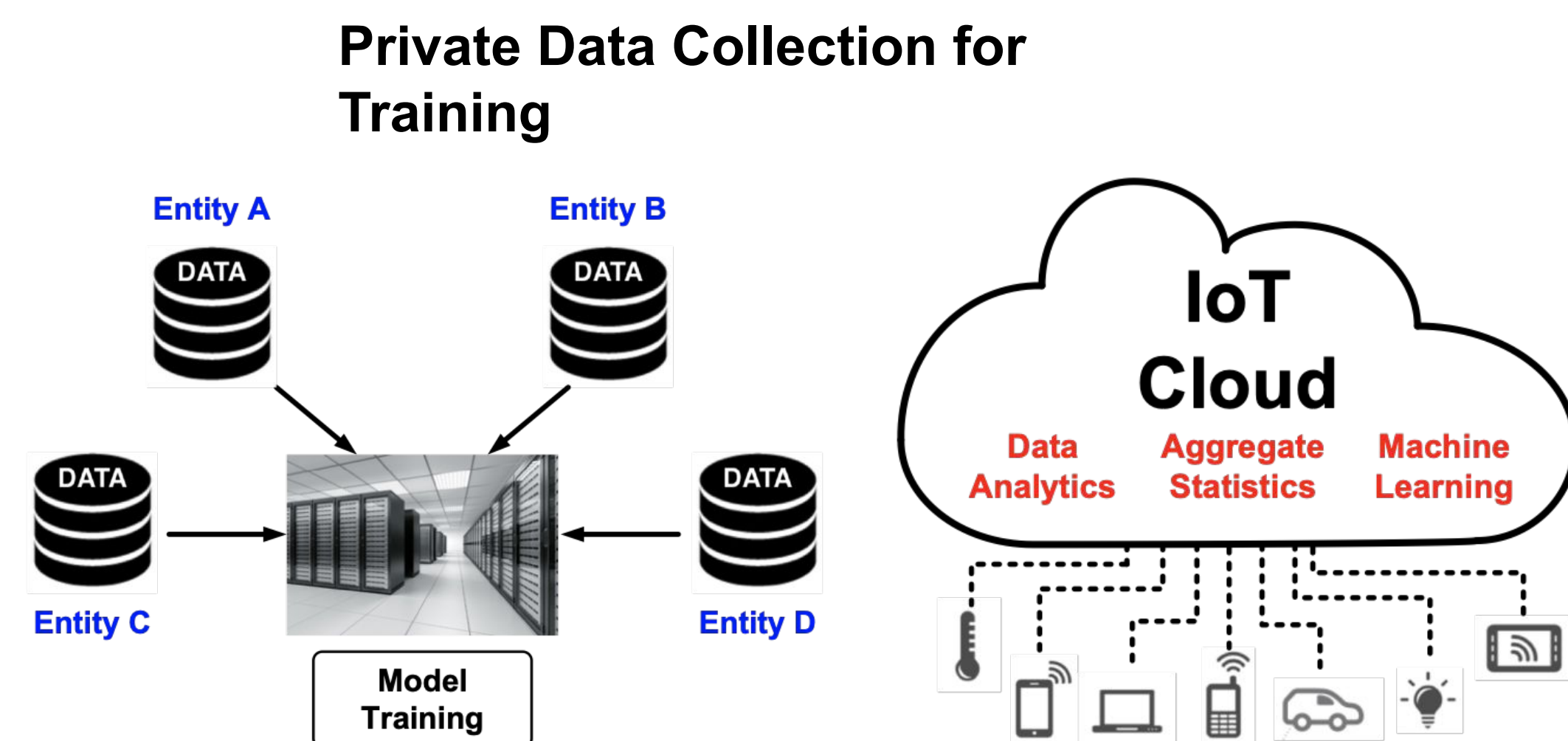
We develop energy-efficient integrated circuits and systems for data processing and communication. In order to improve the system energy efficiency, we explore techniques that highlight a holistic optimization of algorithm, architecture, and circuit-level opportunities. Some of the research projects that have been done so far are shown below.

**We are always looking for talented graduate students.** If you are interested in joining our group, please email me (wooseokchoi@snu.ac.kr).

### Energy-Efficient Integrated Circuits

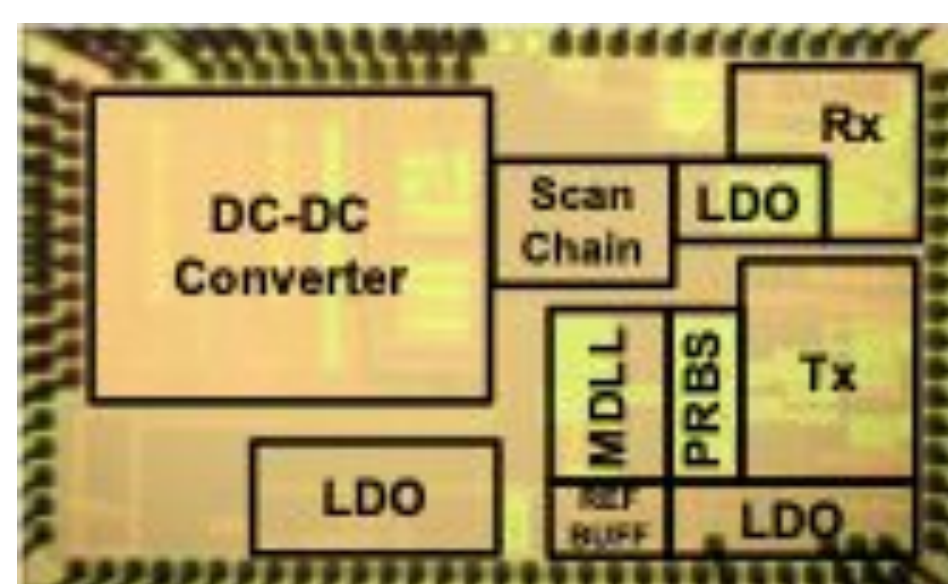
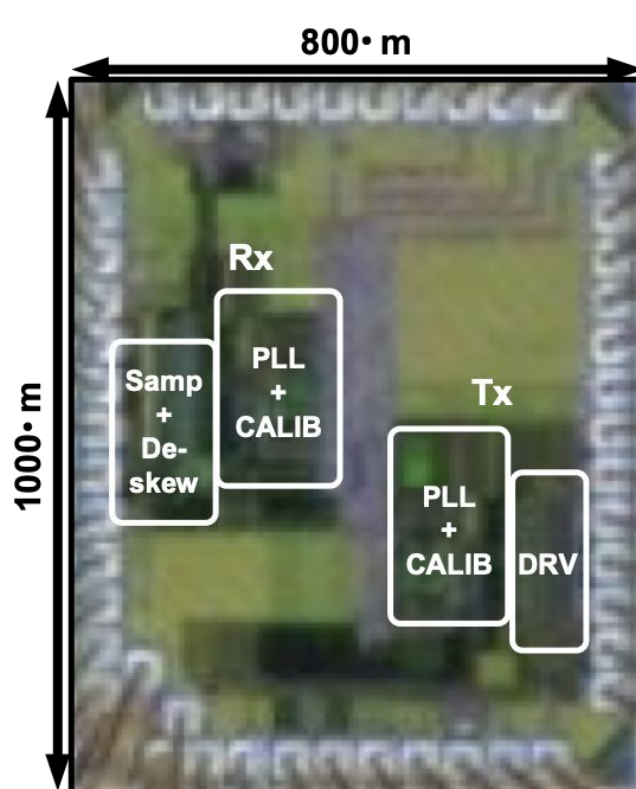


### Privacy-Preserving Machine Learning Systems

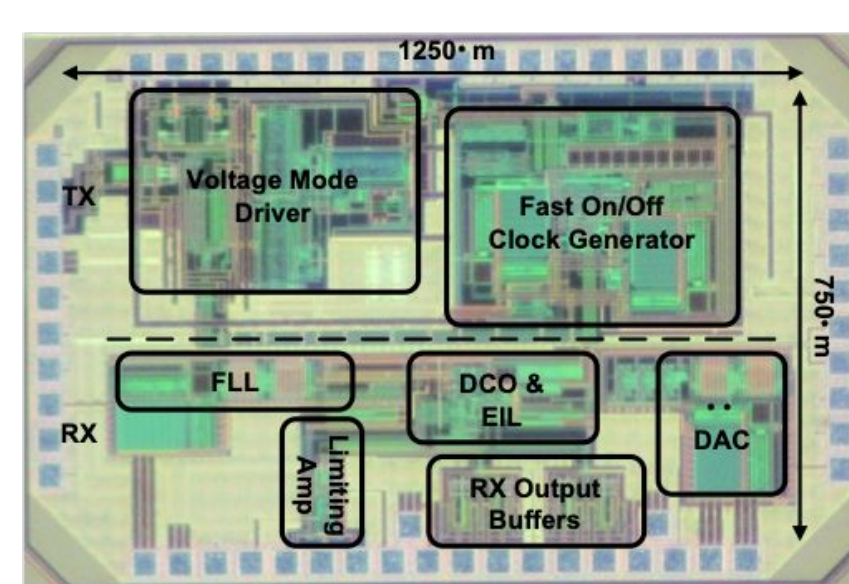


[ISCA'18]: Private data collection using local differential privacy implemented on ULP hardware

### Wireline Transceivers



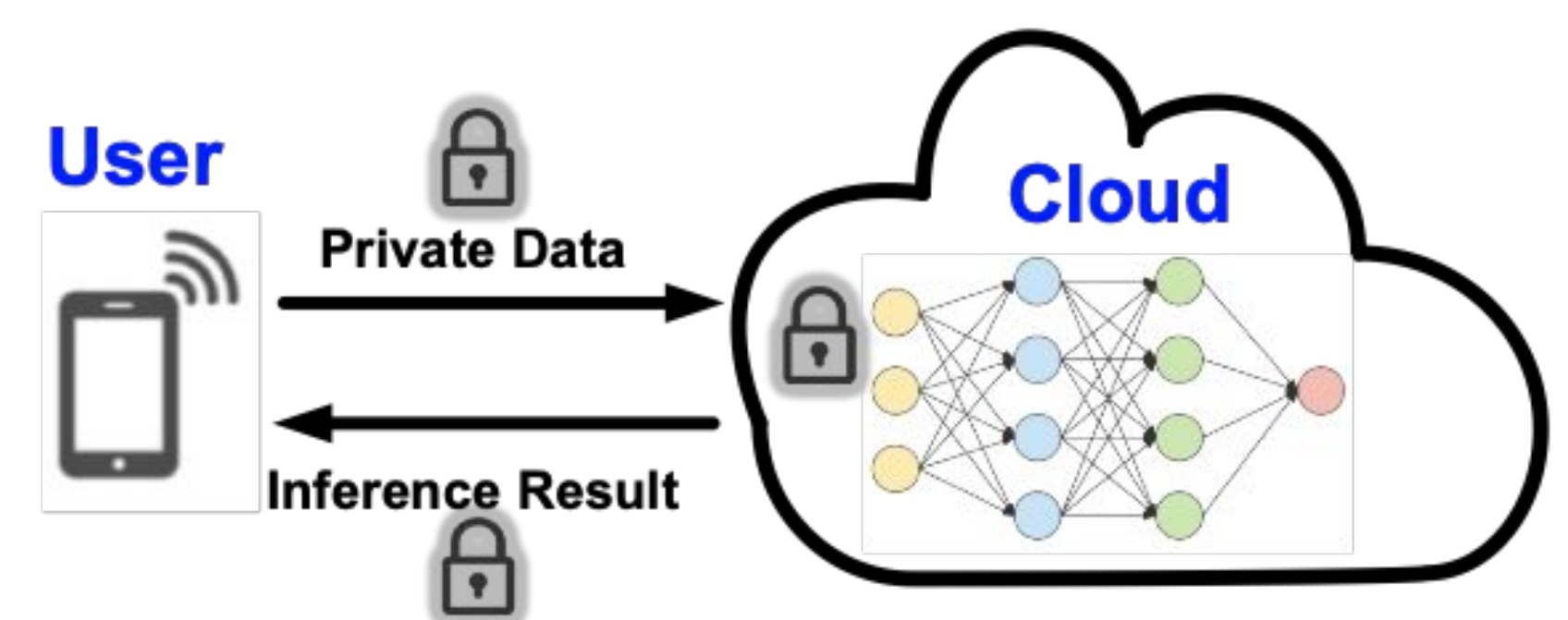
[ISSCC'16]: Rapid On/Off + DVFS



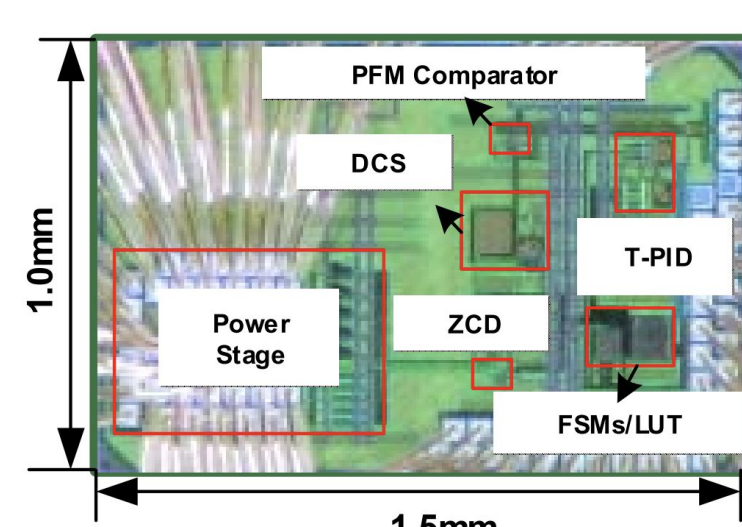
[SOVC'13, JSSC'15]: Rapid On/Off

[ISSCC'15, JSSC'18]: NTV Operation

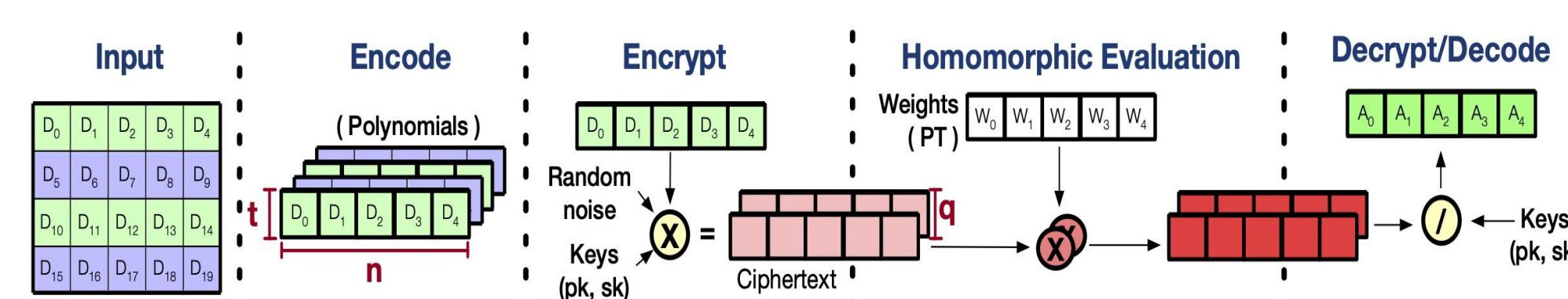
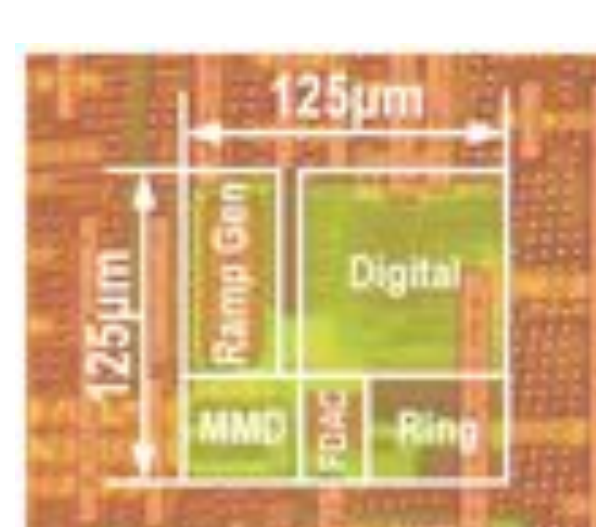
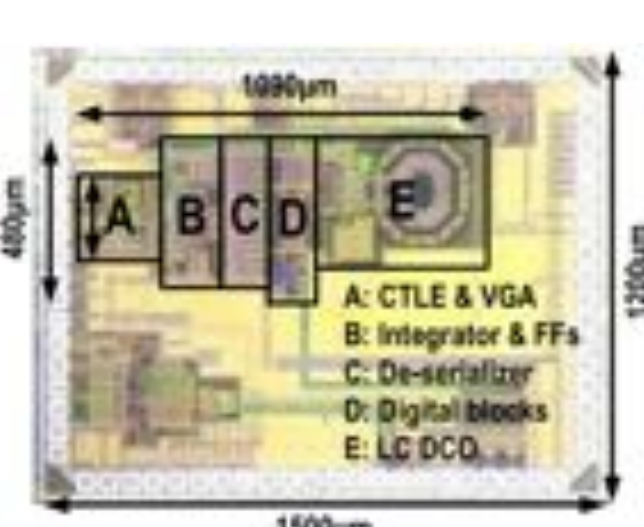
### Private Inference on Cloud



### Power Converters



### CDRs & PLLs



Algorithm/hardware co-design of private machine learning inference systems using cryptographic techniques such as homomorphic encryption and secure multiparty computation

[JSSC'18]: Time-based Controller

[JSSC'19]: Sub-baud-rate CDR

[JSSC'19]: low-area, peaking-free